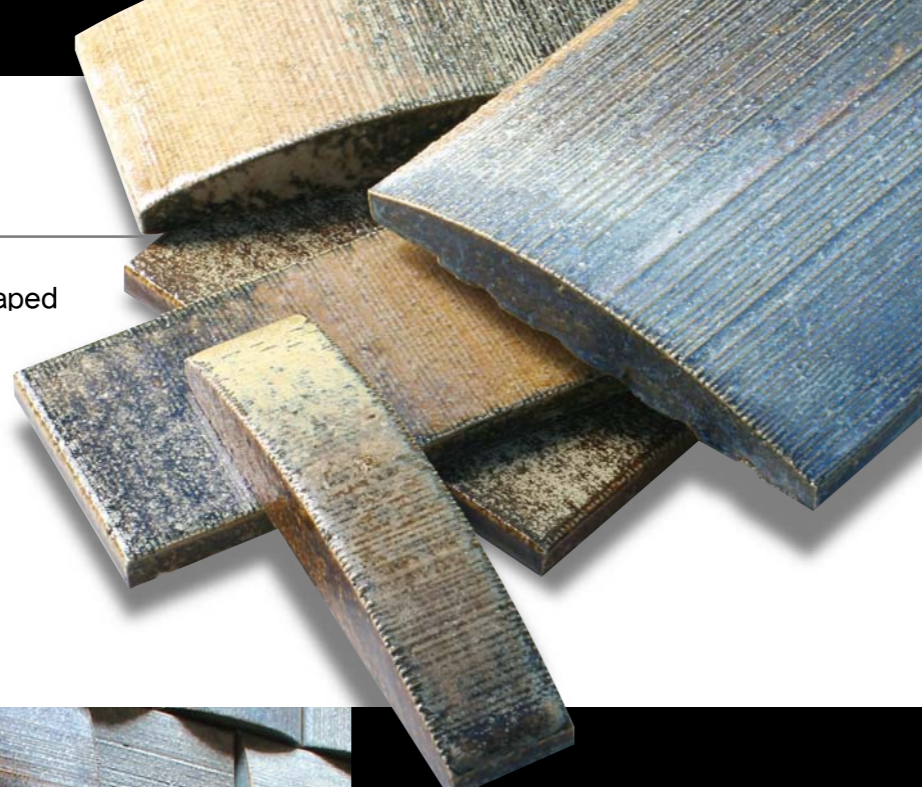


■ Glazed Stoneware Tile

TAIKO 太鼓

The most striking feature that makes Taiko very eye-catching is its bridge-shaped configuration. The modulated pattern designs also enhance its attractiveness.

- 5-13/16" × 5-13/16" (FLAT・凸)
- 2-15/16" × 5-13/16" (FLAT・凸)
- 1-3/8" × 5-13/16" (FLAT・凸)



DESIGN PATTERN



DKCB-01

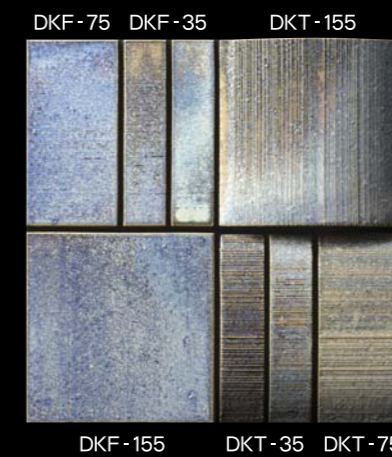
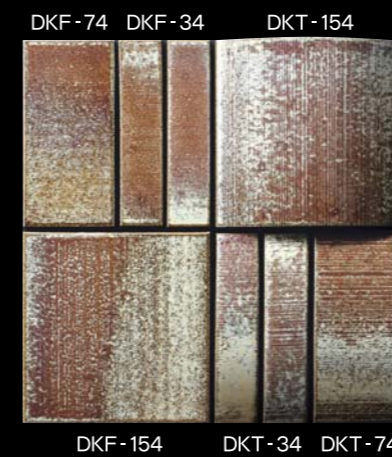
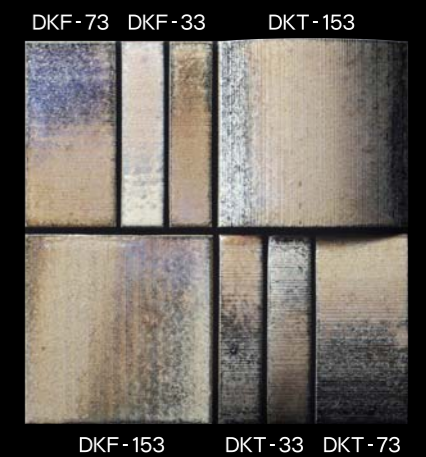
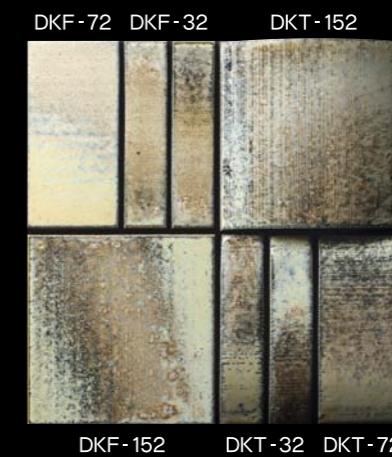
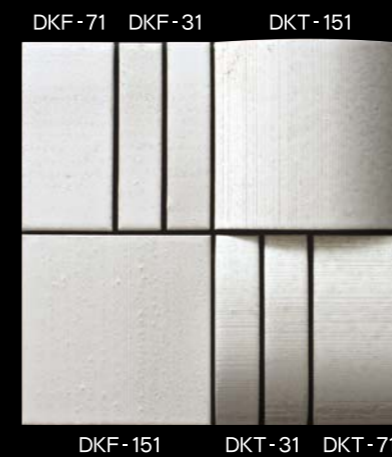


DKCB-02



DKCB-03

COLOR



PACKAGING



- A ● 5-13/16" × 5-13/16" 凸**
 1pc : 0.234sq.ft
 Thickness : 3/8"~15/16"
 Carton Contents :
 18pcs (36.4Lbs / 4.212sq.ft)
- B ● 5-13/16" × 5-13/16" FLAT**
 1pc : 0.234sq.ft
 Thickness : 3/8"
 Carton Contents :
 42pcs (44.1Lbs / 9.828sq.ft)



- C ● 2-15/16" × 5-13/16" 凸**
 1pc : 0.118sq.ft
 Thickness : 3/8"~15/16"
 Carton Contents :
 36pcs (35.3Lbs / 4.248sq.ft)
- D ● 2-15/16" × 5-13/16" FLAT**
 1pc : 0.118sq.ft
 Thickness : 3/8"
 Carton Contents :
 84pcs (41.9Lbs / 9.912sq.ft)



- E ● 1-3/8" × 5-13/16" 凸**
 1pc : 0.055sq.ft
 Thickness : 3/8"~15/16"
 Carton Contents :
 72pcs (32Lbs / 3.96sq.ft)
- F ● 1-3/8" × 5-13/16" FLAT**
 1pc : 0.055sq.ft
 Thickness : 3/8"
 Carton Contents :
 168pcs (38.6Lbs / 9.24sq.ft)

AVAILABLE TRIMS

All shapes are available in all colors.
2-15/16" × 5-13/16" Flat surface only

